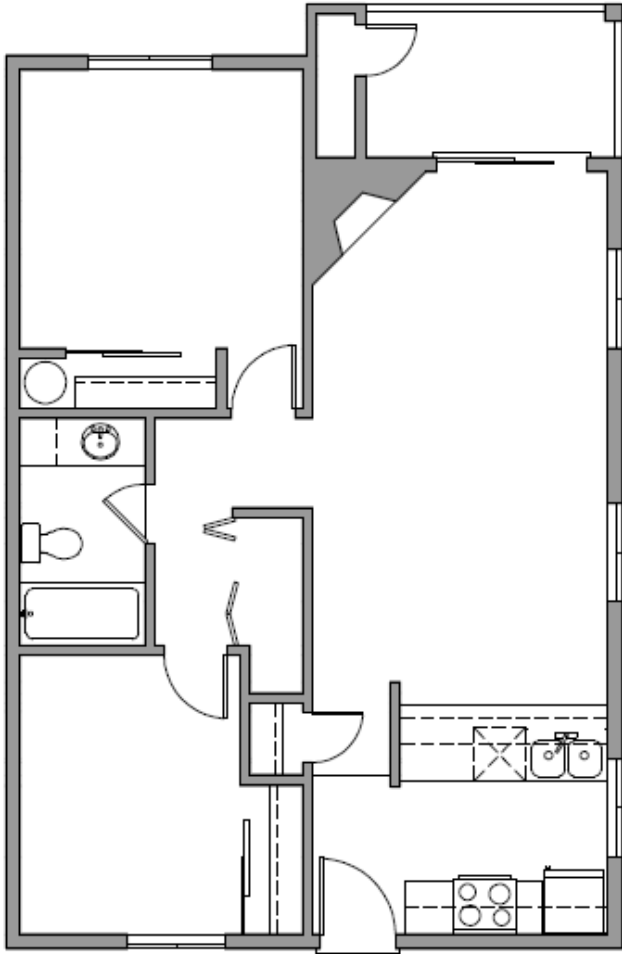




[2-Bedrooms w/ Fireplace End Unit]

NEWPORT APARTMENTS

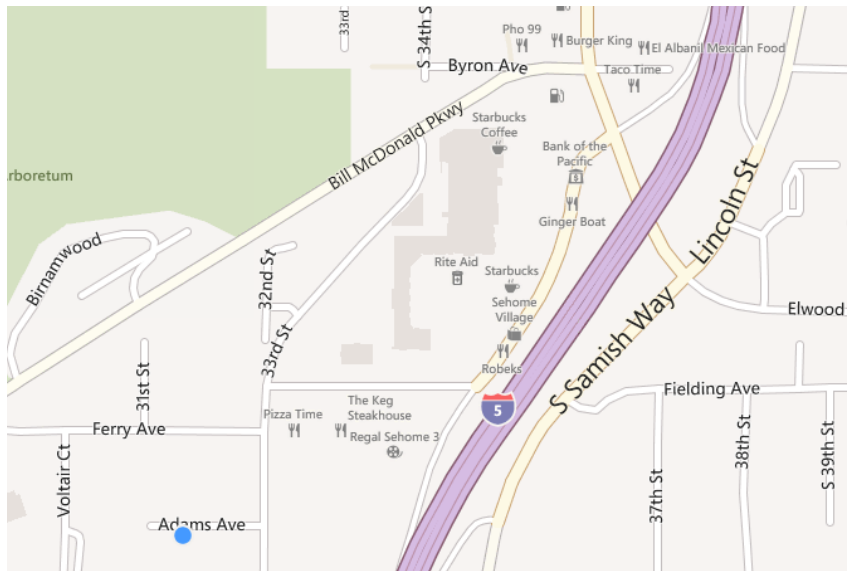


2-Bedrooms w/ Fireplace End Unit

— 794 Sq. Ft.

- Rent \$1,100
- Deposit \$600
- W/S/G

Units: 201, 207, 301, 307



RentNewportApartments.com



Apartment Information

Rent Includes:

Water/Sewer & Garbage paid. Coin-operated Laundry On-Site.

One Bedrooms:

1 Bathroom, Carpeted, Microwave/Hood Vents, Dishwasher (Larger & Smaller Units Available, Priced Accordingly)

Two Bedrooms:

1 Bathroom, Carpeted, Microwave/Hood Vents, Dishwasher, W/D Hookups in Unit (2nd/3rd Floor Unit Have Wood Fireplaces, End Units Have Side Windows, Priced Accordingly)

Rental Agreements:

Six Month Minimum Rental Agreement with automatic Month-To-Month thereafter. We require a deposit with the application as the security deposit. We return the deposit on applications that are not approved.

Requirements/Application Processing:

- Verifiable Income— 40% of Income Must Cover Rent
- Verifiable Rental History— Good Standing
- Credit Check— Good Standing
- Criminal Background Check
- Picture ID & Social Security Number

Screening Fees: (cash or money order)

- \$25/Individual
- \$35/Married Couple
- \$15/Co-Signer

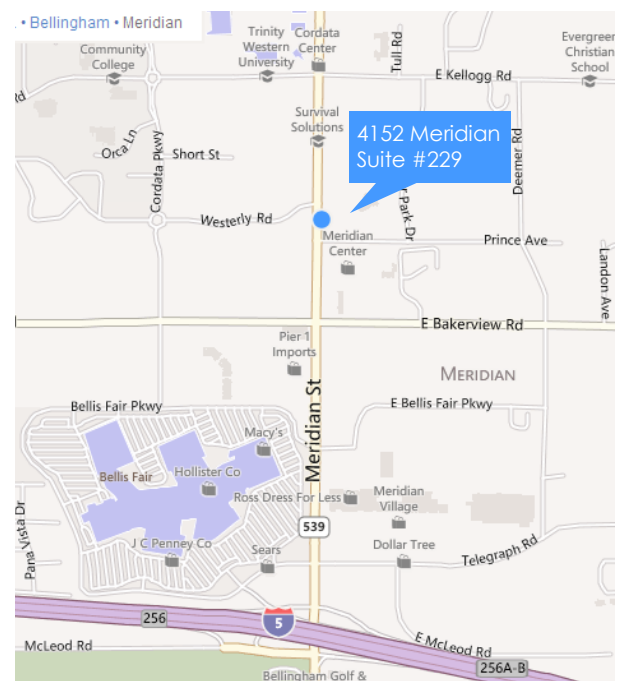
Pet Deposits: (cash, check, or money order)

\$400 per cat (cats only)

Contact:

Caitac USA Corp Property Management
360-738-6800

**Make Checks Payable To: Caitac Enterprise Corp/
Newport Apartments**



**Caitac USA Corp.
Property Management**

4152 Meridian Street ▪ Suite #229
Bellingham, WA 98226
Tele: 360.738.6800 ▪ Fax: 360.738.7018